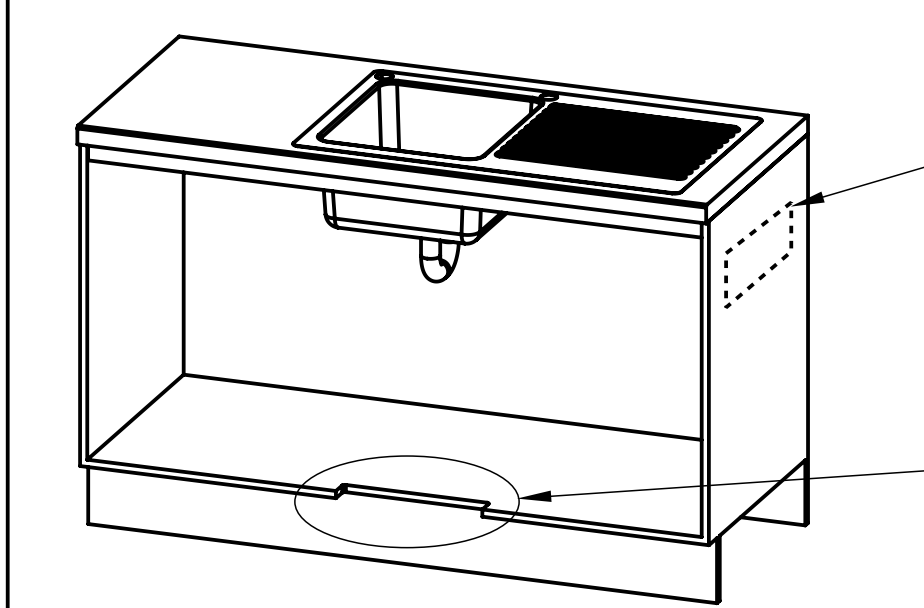
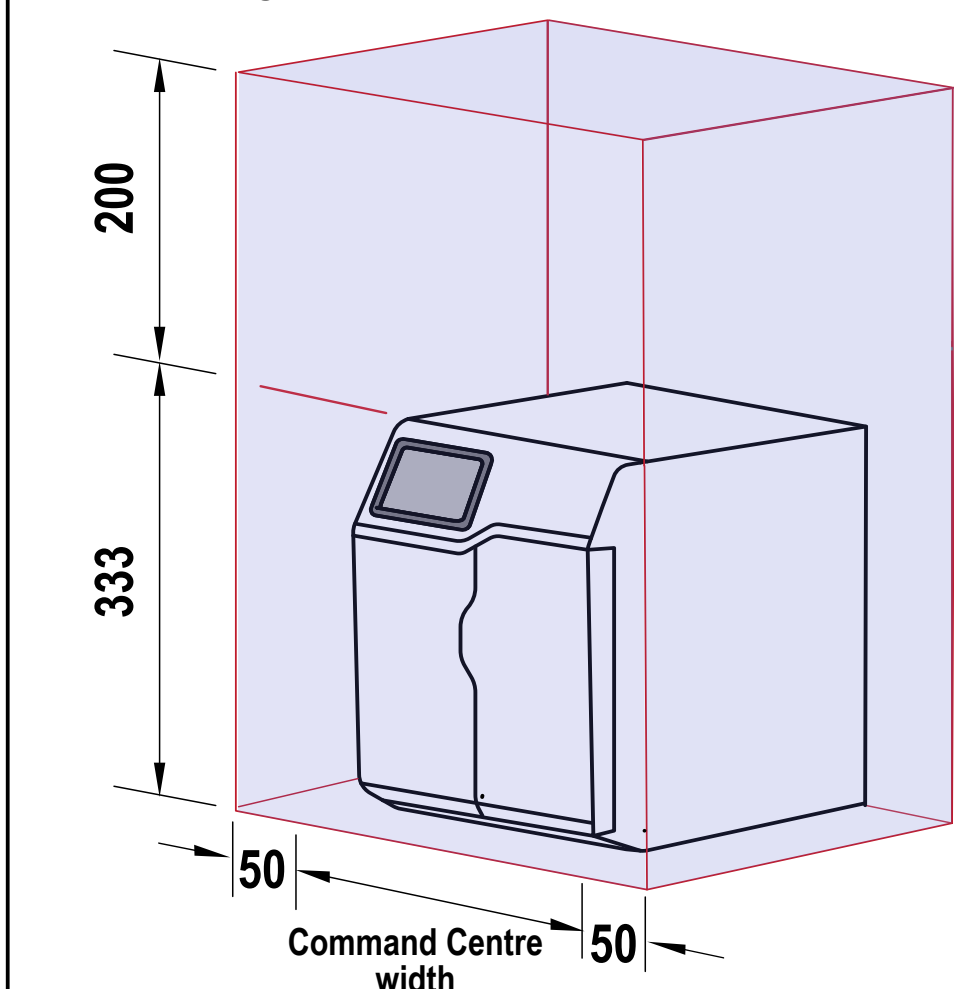


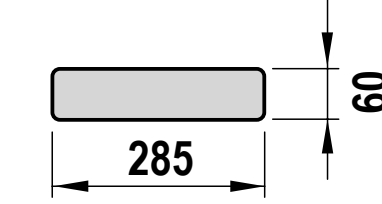
Ventilation requirements Contact your local service provider if ventilation is not suitable

Clearance envelope

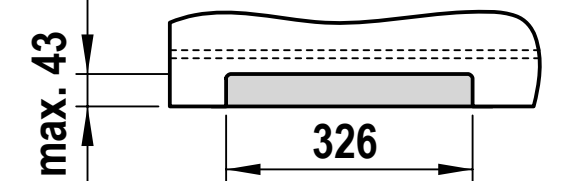
Position the Tap and the Command Centre as close together as possible.



Air outlet louvre (if required)
Cut-out in door/wall, towards the top of the cabinet

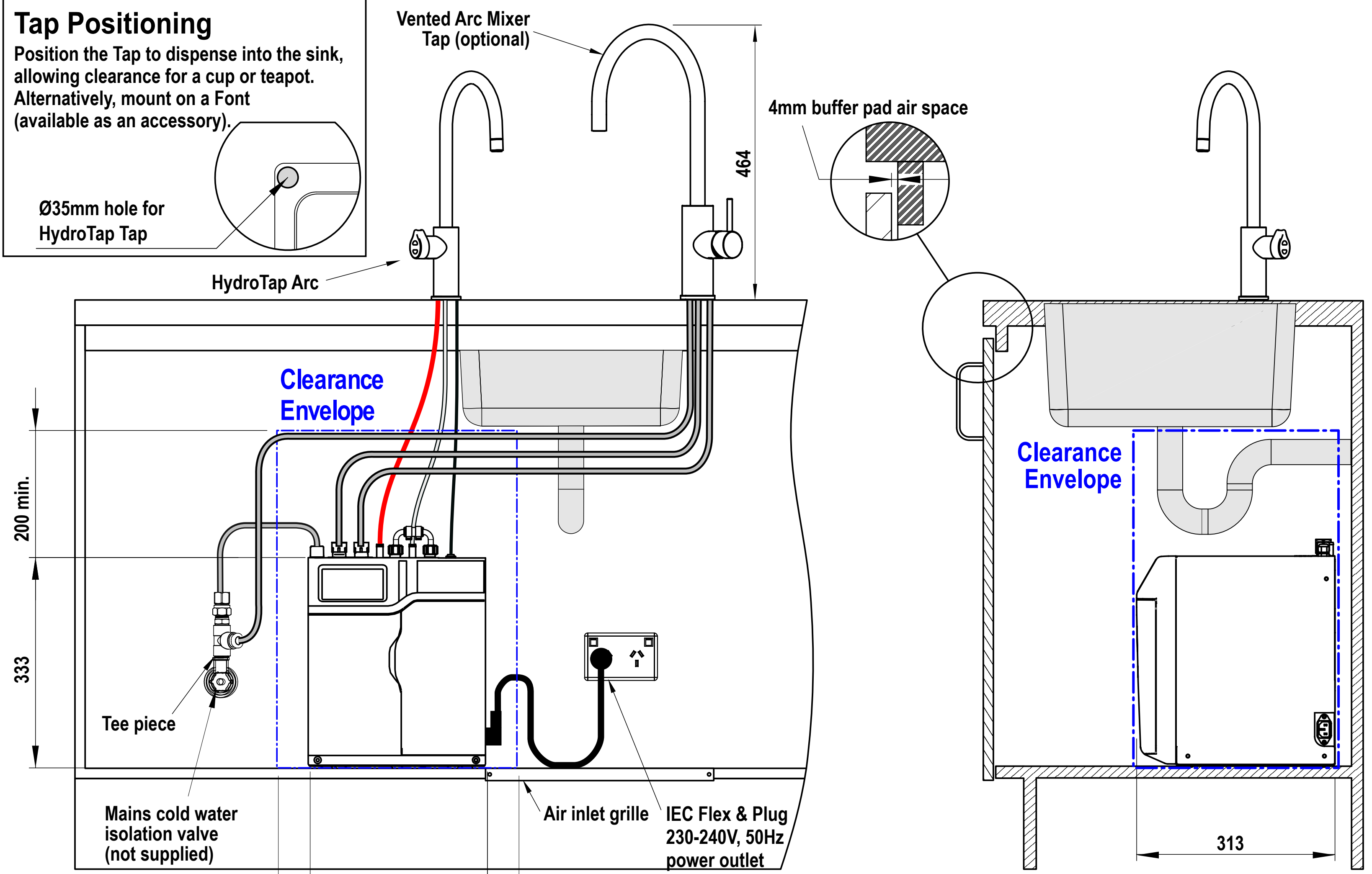
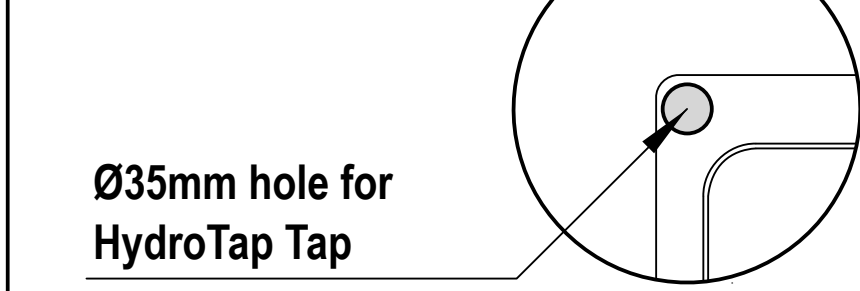


Air inlet cut-out (required)
Cut-out in cabinet floor



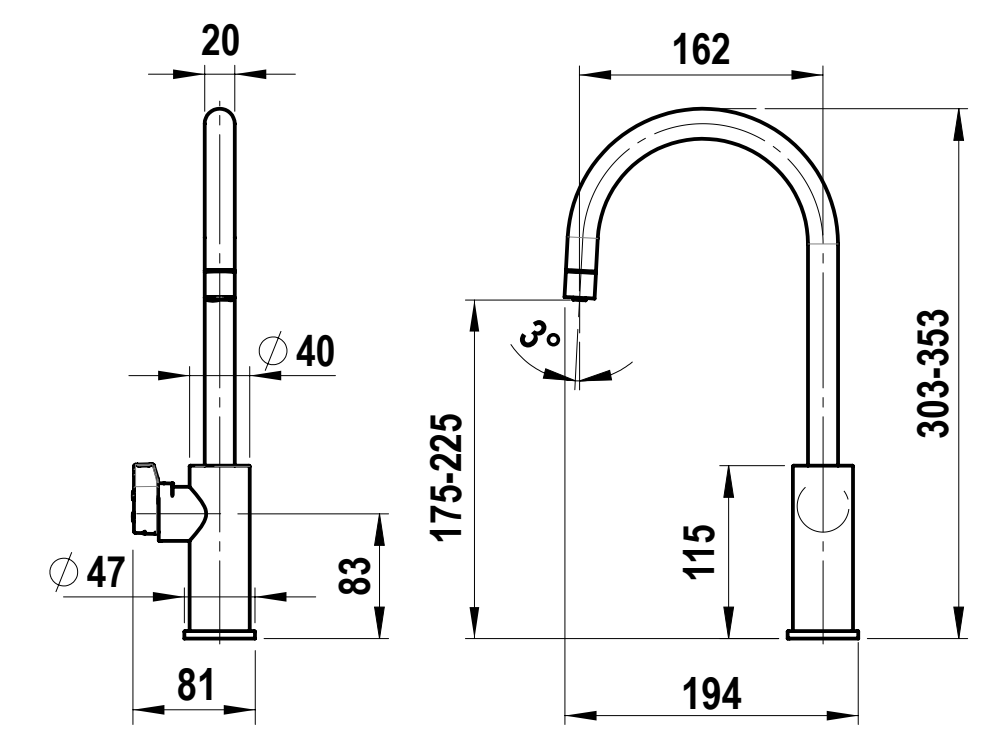
Tap Positioning

Position the Tap to dispense into the sink, allowing clearance for a cup or teapot. Alternatively, mount on a Font (available as an accessory).

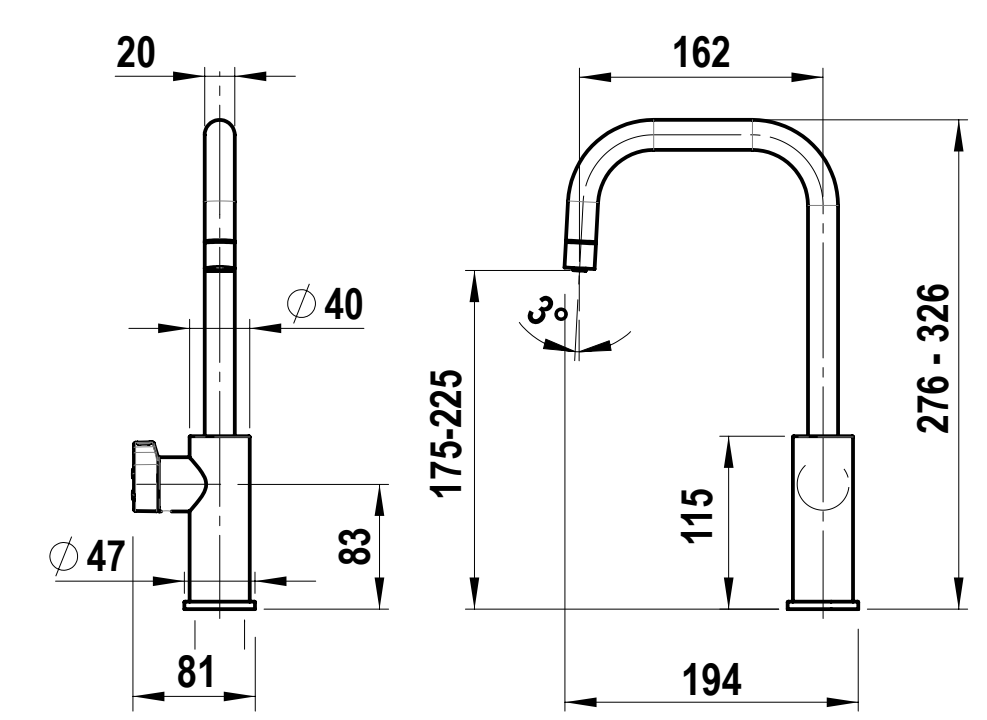


HydroTap Tap options

HydroTap Arc Tap

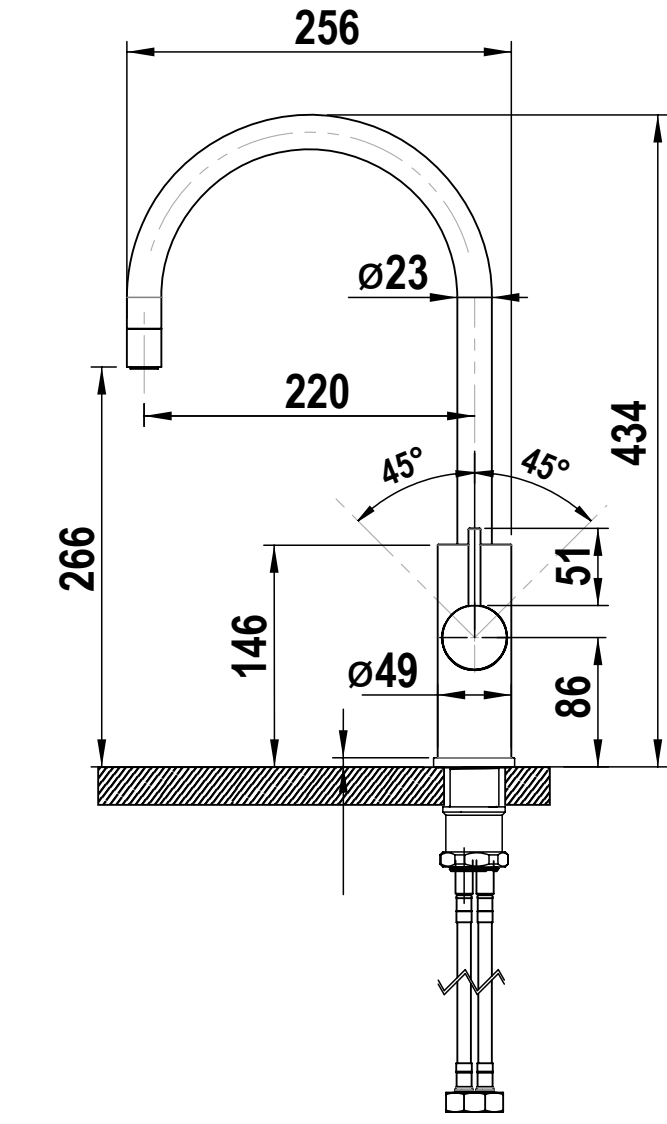


HydroTap Cube Tap

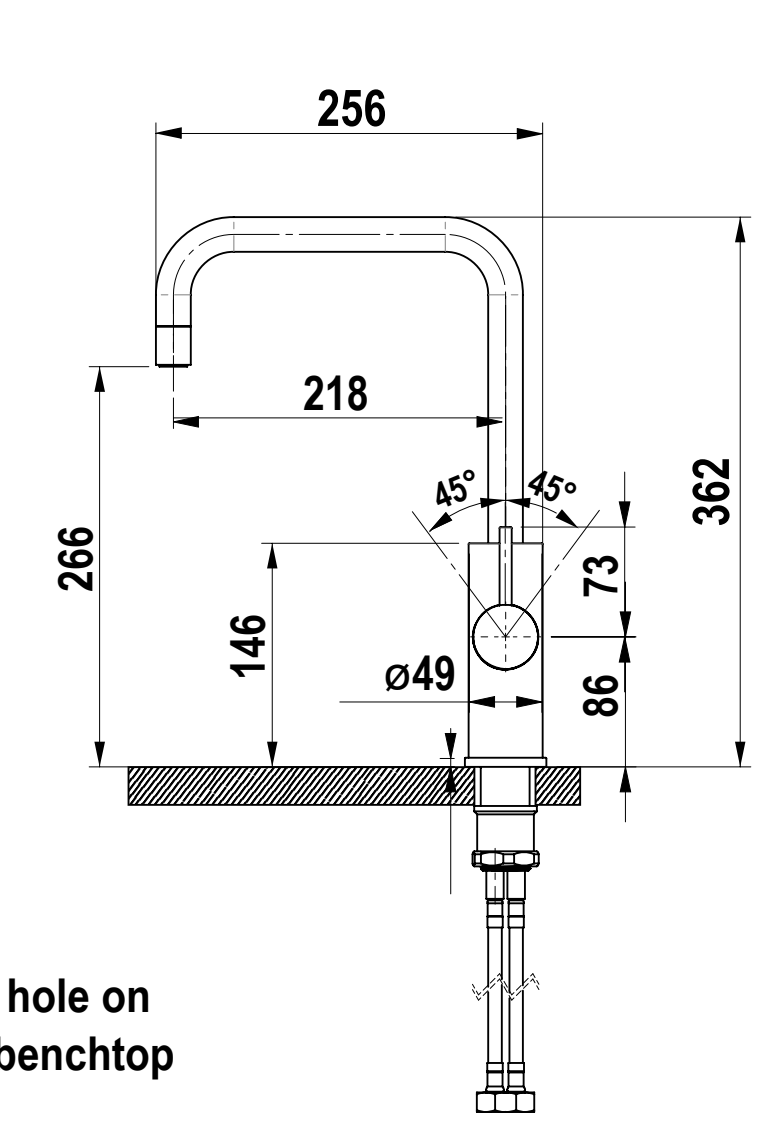


Mixer Tap options

Arc Mixer Tap



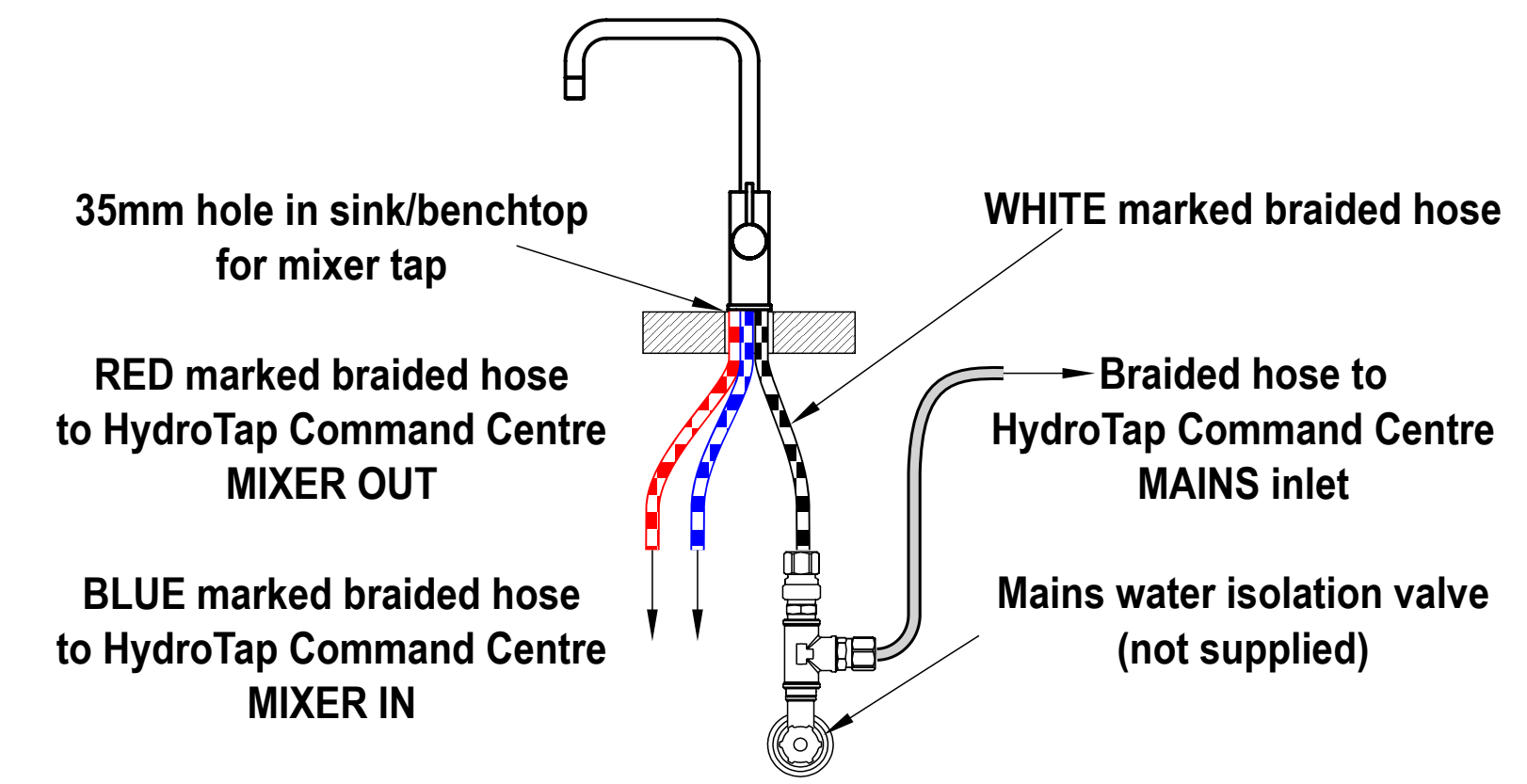
Cube Mixer Tap



Ø35mm hole on sink or benchtop

Vented mixer tap installation

Only cold water supply required



**HydroTap G5
B60 H, B100 H**

shown with HydroTap Arc
and Arc Mixer Tap (V)